



MONTHLY MEMBERSHIP PROGRESS REPORT

District 27 C2

Results as of: 6/30/2017

GMT: OPEN

LOCATION WISCONSIN

GMT CA

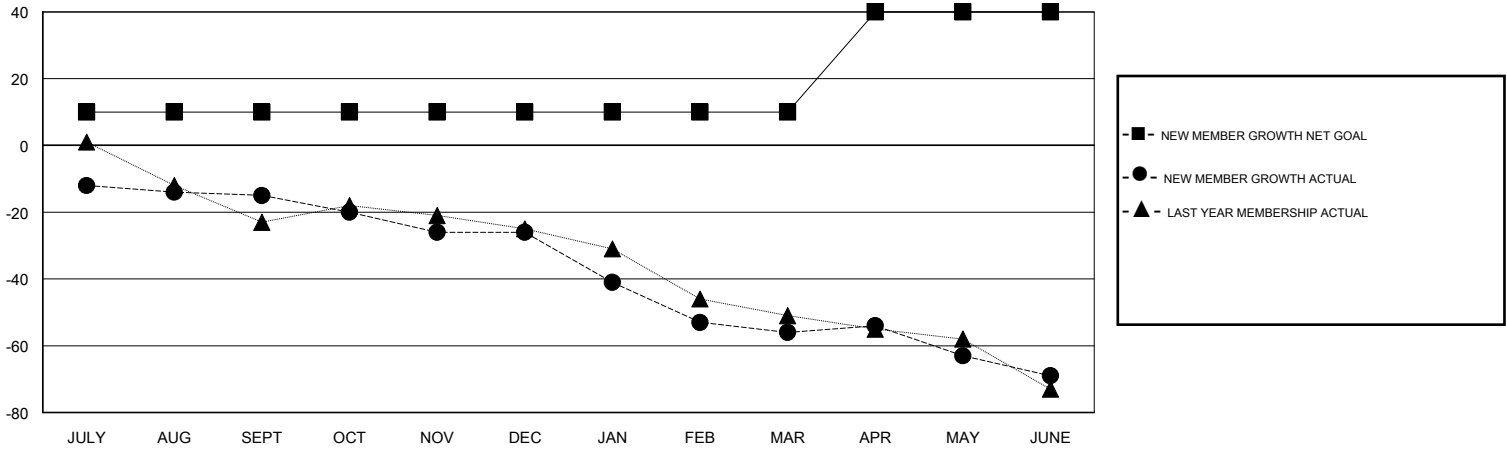
Clubs			
RESULTS FOR 2016-2017			
QUARTER	NEW CLUB GOAL	NEW CLUBS	DROPPED CLUBS
JULY/AUG/SEPT	0	0	0
OCT/NOV/DEC	0	0	0
JAN/FEB/MAR	0	0	0
APR/MAY/JUNE	1	0	0

Members			
RESULTS FOR 2016-2017			
QUARTER	NEW MEMBER GROWTH NET GOAL (not reinstated or transfers)	NEW MEMBER GROWTH ACTUAL (not reinstated or transfers)	DROPPED MEMBERS ACTUAL (including transfers)
JULY/AUG/SEPT	10	26	41
OCT/NOV/DEC	0	18	29
JAN/FEB/MAR	0	23	53
APR/MAY/JUNE	30	37	50

GOALS AND ACTUAL NEW CLUBS CUMULATIVE



GOALS AND ACTUAL MEMBERS CUMULATIVE



DROPPED CLUBS: 0	32 CLUBS OF 44 ADDED 1 OR MORE NEW MEMBERS	<u>GENDER DISTRIBUTION</u>
DROPPED MEMBERS	CLICK HERE FOR CUMULATIVE MEMBERSHIP DATA	MALE 1,089 (73.23%)
DECEASED 26		FEMALE 398 (26.77%)
CLUB CANCELLED 0		TOTAL FAMILY UNIT MEMBERS 353
OTHER 147		FAMILY MEMBERS PAYING HALF DUES 178
TOTAL 173		